






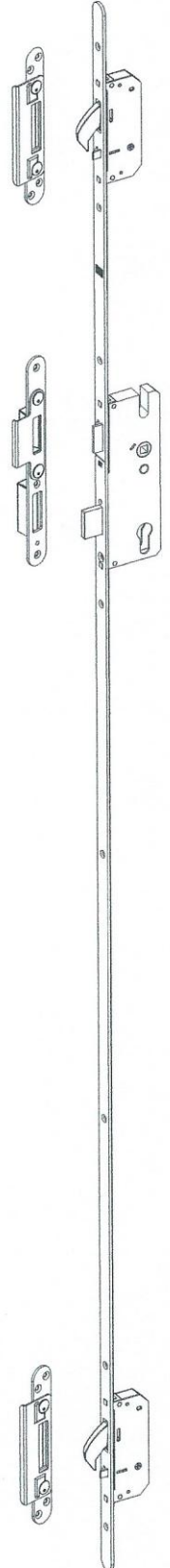
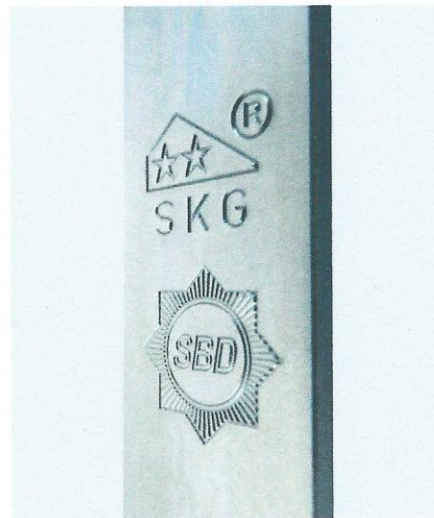


WINKHAUS HERITAGE NIGHTLATCH INFORMATION

- ✓  The AV2 Heritage Lock is never “just locked on the latch”. When closing the door, two solid anti-pushback hooks automatically operate to achieve instant security. The lock can be additionally secured by throwing the deadbolt with the key on the outside and thumbturn on the inside.
- ✓  The security nickel plated steel hooks fully penetrate the heavy duty steel keeps and help prevent forcing apart of the door and frame. AV2 Heritage is Police Secured By Design, PAS23/24, SKG, and VdS¹ accredited.
- ✓  The high performance gearbox is tested to 100,000 cycles and offers the lowest possible operating forces.
- ✓  Tested to PAS 023 the AV2 hook shape provides low operating forces and helps doors achieve a higher level of weather performance.
- ✓  Winkhaus locks have a protective surface coating in excess of EN 1670 : 2007 Grade 4 which is designated as ‘Very high corrosion resistance’.
- ✓  AV2 Heritage Lock has been designed to harmonise with the Winkhaus XR6-51 Kitemark profile cylinder (KM531333) and in combination with a security escutcheon meets PAS 24 and the highest TS007 3☆ security requirements.
- ✓  The AV2 Heritage Lock is superbly engineered and manufactured in Germany. Established in 1854 Winkhaus is a market leader producing innovative security solutions to meet the challenges of tomorrows’ rapidly changing security and ease of use requirements but at the same time empathising with the fine architectural needs of British and Irish heritage.



XR6-51 Kitemark Thumbturn Cylinder (KM531333)



Police ‘Secured by Design’ stamped

¹International certification institution for the Insurance Industry